

IGLESIA BAUTISTA
CIUDAD DE DIOS

CORE GROUP



William and Catherine Reversat

Marcos and Jessica Reversat



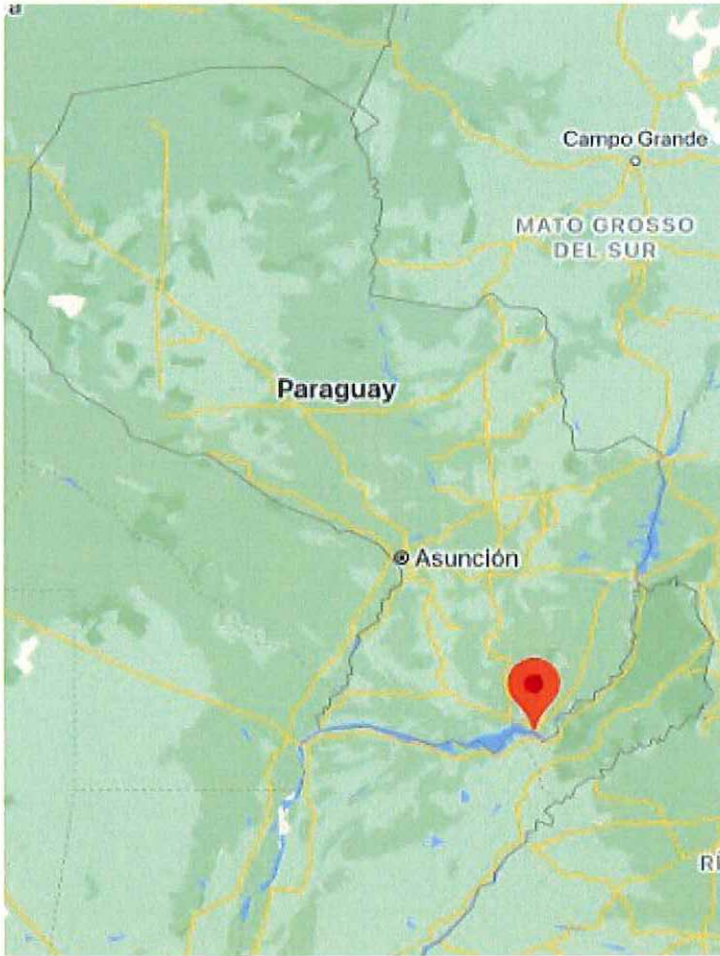
Addie Musheff

Casey Howell



ENCARNACIÓN

PARAGUAY



Encarnación is a city located in the south of Paraguay. It has the peculiarity of being a border with Posadas, Argentina, which in recent years has been one of the busiest and most important border crossings in the region (each year more than 10 million leave or enter the country through Encarnación).



The city has a very young average age:

- more than 70% of the population are under 45 years of age,
- and more than 30% of the city are children and adolescents under 14 years of age.

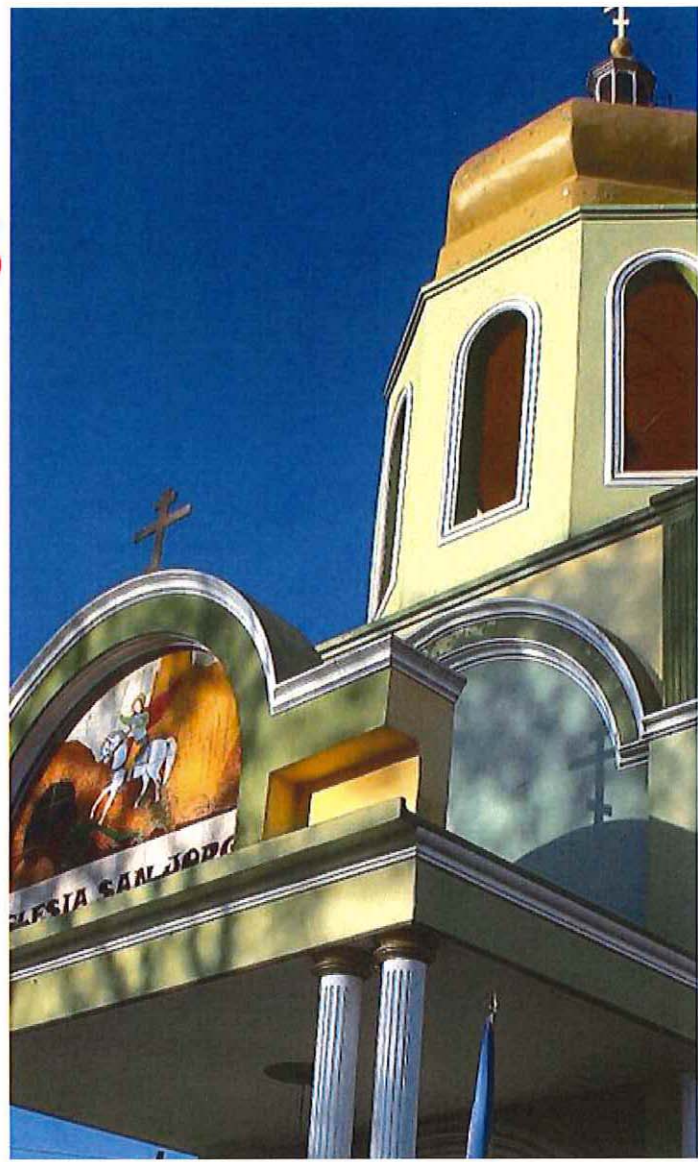
It also has the **most cosmopolitan ethnography** in the country with great racial and cultural diversity.

The metropolitan area has more than 226,000 inhabitants, which makes it the most populated and developed city in the south of the country.

Together with Posadas, Argentina, they make up an urban agglomeration of more than half a million inhabitants.

GREAT MINISTRY OPPORTUNITIES

- In incarnation there is only 1 Baptist church. In addition, the Paraguayan Baptist Convention only has aprox. 20,000 members in the entire country.
- More than 92% of the population are Catholic. Only 3% of the population are Christians, predominantly Pentecostals.

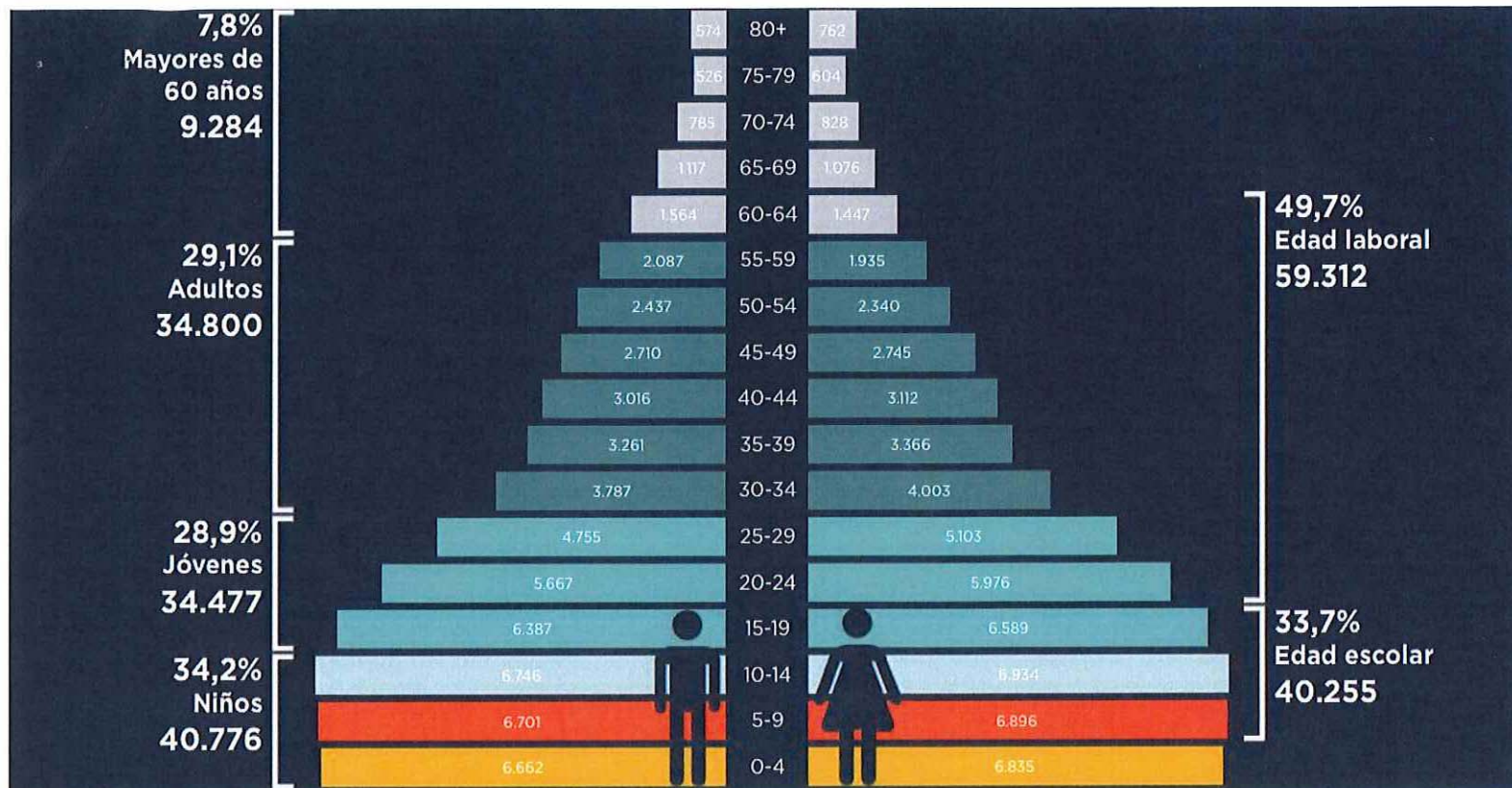


- Encarnación has the most cosmopolitan ethnography in the country with a great racial and cultural diversity, where Paraguayan aborigines (Guarani) and mestizos coexist daily together with the German, Russian, Ukrainian, French, Italian, Japanese, Polish, Syrian and Lebanese communities.
- There is a community of more than 1000 Lebanese, Syrians and Arabs.
- The city also has consulates from Germany, Japan, Brazil and Argentina.
- In the suburbs of the city there is a Japanese community of more than 20,000 inhabitants
- After Catholicism, the Orthodox churches are the majority.

30° Aniversario de la inmigración JAPONESA al PARAGUAY
パラグアイ日本人移住80周年記念祭典

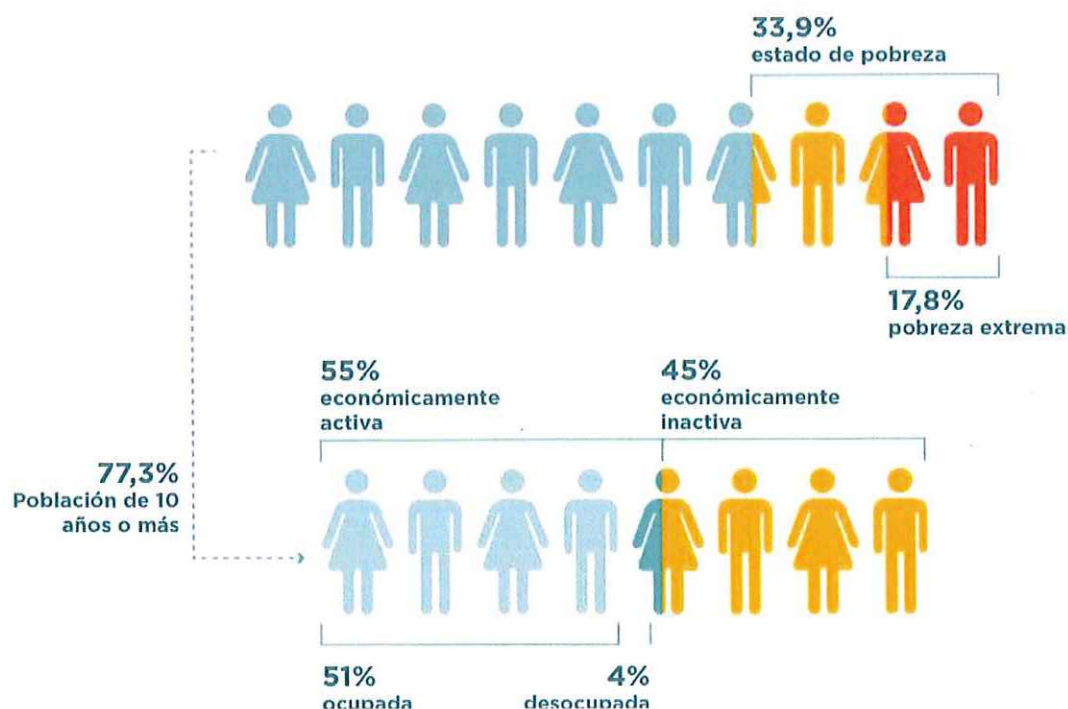


**MISSIONS,
FUTURE MISSIONARIES
AND FUTURE
CHURCH PLANTERS**



GREAT NEEDS

- 34.3% of the population are children under 14 years of age.
- More than 63% of the population are under 30 years of age
- 33.7% of the population are school age.
- 49.7% of the populations are work age.
- 33.7% of the population are school age.
- 33.9% live in poverty.
- 17.8% live in extreme poverty



VISION

To be a spiritual city in the midst of a physical city, which makes disciples and gathers worshipers of Christ to glorify and make God visible.



MISSION

Glorify God by making and mobilizing faithful disciples of Christ who grow in community, love others, and proclaim the gospel.



COMMITMENT

- Proclaim the authority of God's Word without excuses (2 Timothy 4: 2).
- Exalt the name of Jesus through worship (John 4:24).
- Firmly believe in the power of prayer (Ephesians 6:18).
- Share the Good News of Jesus with boldness (Ephesians 6: 19-20).



BELIEFS

- Baptist Faith and Message 2000.
- 1853 New Hampshire Confession of Faith.

VALUES

- Expository Preaching
- Biblical Theology
- Biblical Understanding of the Good News
- Biblical Understanding of Conversion
- Biblical Understanding of Evangelism
- Biblical Understanding of Church Membership
- Ecclesiastical Biblical Discipline
- Interest in promoting Christian Discipleship and Growth
- Biblical Ecclesiastical Leadership

CALENDARY

1

Core Group Development

(September to December
2021)

Training
Vision
Fund Raising
Commission Service

2

Pre-Launch

(January to March 2022)

Moving to Paraguay
Biblical Studies
Evangelism
Promove the Church

3

Launch

(April to August 2022)

Service Open to Public
Grupal Discipleship
Home Bible Studies

OFFICIAL INAUGURATION

SEPTEMBER 2022

FUTURE PROJECTS

- Canteen for low-income children
- Medical Help
- Biblical Seminary
- Church Planting Residency Program
- Missions interships



BUDGET

Monthly

- Personnel and Operations
- Ministry and Outreach

\$3000

\$500

Total

\$3500

Launch

- Equipment
- Legal establishment

\$5000

\$5000

Total

\$10000

¿How can you support?

Prayer

Help us by praying that we can fulfill the vision of the church and that we can reach new people for Christ

Missions

Join us on a mission trip to Encarnacion, helping us with community activities and evangelism.

Financially

Consider helping us financially for 3 years. The plantations have a limited budget and depend exclusively on the sponsors (or partners).

Partners

- Iglesia Bautista Central
- Iglesia Bautista Ciudad de Dios- PR
- Park Baptist Church

Donations

Iglesia Bautista Central will receive and manage all financial support.

Maria Bravo

- mbravo@ibcentral.org
- 405-439-2199

Pastor Julio Crespo

- jcrespo@ibcentral.org
- 404-754-7848